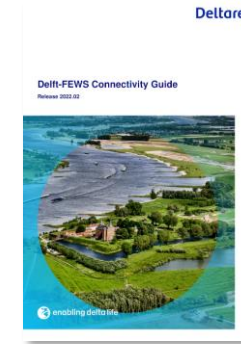
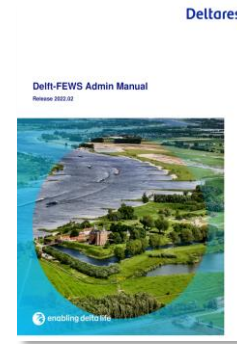


Relation between documents...

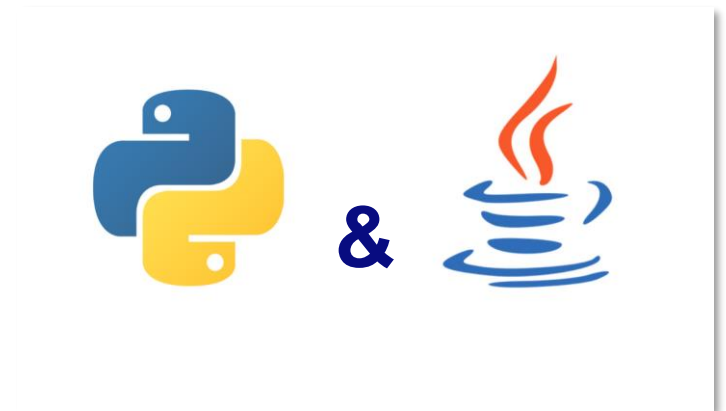
	A. Delft-FEWS Shell	B. Delft-FEWS Admin	C. Delft-FEWS Client	D. Delft-FEWS Connector	E. Delft-FEWS Data	F. Delft-FEWS Engine	G. Delft-FEWS Gateway	H. Delft-FEWS Interface	I. Delft-FEWS Manager	J. Delft-FEWS Monitor	K. Delft-FEWS Operator	L. Delft-FEWS Reporter	M. Delft-FEWS Scheduler	N. Delft-FEWS Server	O. Delft-FEWS Tools	P. Delft-FEWS Utilities	Q. Delft-FEWS Web	R. Delft-FEWS Wiki
01	01	01	01	01	01	01	01	01	01	01	01	01	01	01	01	01	01	01



	Security Matrix + Description	Admin Manuals	Connectivity Guide
Location	Delft-FEWS PM one drive	https://publicwiki.deltares.nl/display/FEWSDOC/Delft-FEWS+Admin+Manuals	https://publicwiki.deltares.nl/display/FEWSDOC/Delft-FEWS+Connectivity+guides
Available	Deltares (-USA) Clients (on request + discussion)	WIKI (login required)	WIKI (login required)
Status	Final Draft available	Available for: 2018.02 – 2023.01	Available for: 2018.02 – 2023.01
Topic / focus	What security aspects are relevant for Delft-FEWS systems? And where to solve them.	Recommended deployment steps + explanation on how to install in a secure way	Even more technical details on the how to install the Delft-FEWS components secure.
2023.01 update	First version	Security aspects added	Security aspects added

Python Integration

- Goal: embedding Python in Delft-FEWS (Java Embedded Python package)
- First objective: **General Adapter** + in memory transfer
 - Scalar time series
 - Gridded time series
 - Minimal support for: *xarray*, *numpy* and *pandas*
 - Interesting use cases (like PCRaster functionality, but also handling ensembles etc)
- Second objective: Create own Transformation
 - Embedding Python in **Transformation** Module
- More info: Boyan.Domhof@deltares.nl or Arjen.Haag@deltares.nl

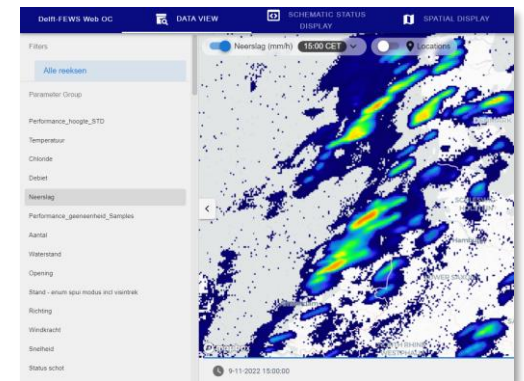


Other roadmap developments

Web Operator Client in 2023

From beta-version to full product: Web OC is a stable component of the Delft-FEWS software suite.

- **Stable version Web OC** based on 2023.02 Delft-FEWS release. Web OC component configuration will be managed from Delft-FEWS configuration (components: data view, topology, ssd, system monitor, spatial display).
- **Stable version with limited functionality** will be the starting point for further development withing projects.
- Documentation, Support, EULA, testing process in place.
- User roles and permissions as configured in Delft-FEWS will be respected by Web OC back-end and front-end.
- CI/CD pipeline in place
- Take feedback from INT User Days 2022 into account.



Other roadmap developments:

Master Controller *high availability* (using Azure cloud services)

- Implementation based on ARM templates (this already works icw upgrade to 2022.02 or later) using the **Azure Virtual Machine Scale Sets** concept
- Definition of a spare VM (with a Delft-FEWS MC on it) ready to be launched when the primary MC goes down



Additionally (read: version 2 of the High Availability)

- **Azure KeyVault integration** and **Health Checks** to support scale sets/kubernetes probes requires development.
- Even without these developments, the improved ARM templates have added value (= high available MC, FSSs in another Azure availability zone)

Open Archive

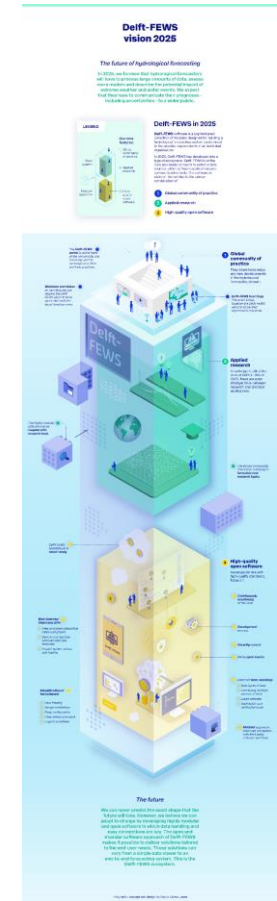
- New **vision document & implementation plan** for the Open Archive (Q3 2023)
 - Open Archive: more & more important
 - Projects & developers determined functionality & priorities
 - Need for vision (document), implementation plan and structural attention by PO
 - External (but known) party to co-ordinate & construct this vision (Deltares supervision)

The screenshot shows the Open Archive web interface. The top navigation bar includes 'Bestand', 'Extra', 'Dashboards', and 'Opties'. A red circle highlights the 'Archive Catalogue' button in the 'Extra' menu. The main interface has a search bar and filters for 'area', 'time zero is between', 'data set', and 'source'. A table below shows a list of data sets with columns for 'data set', 'area', 'source', 'Whatif template name', 'Whatif scenario name', and 'prope'.

data set	area	source	Whatif template name	Whatif scenario name	prope
202202180000_WDNZ_series_delft3dfm_dcs...	rwsos 6	rwsos.noordzee	--	--	--
202202180000_WDNZ_series_delft3dfm_dcs...	rwsos	rwsos.noordzee	--	--	--
simulatedforecasting_QINE_MLR_6hourly.nc;simulatedf...	WBrSusquehanna	MARFC_MMM_Forec...	--	--	--
simulatedforecasting_QINE_MLR_6hourly.nc;simulatedf...	UpperPotomac	MARFC_MMM_Forec...	--	--	--
simulatedforecasting_QINE_MLR_6hourly.nc;simulatedf...	UpperMainStemSusq	MARFC_MMM_Forec...	--	--	--
simulatedforecasting_QINE_MLR_6hourly.nc;simulatedf...	UpperDelaware	MARFC_MMM_Forec...	--	--	--

New Delft-FEWS vision – start in 2025...

- Towards a new vision for Delft-FEWS (successor of current Delft-FEWS 2025 vision)
 - Current vision “Delft-FEWS 2025” has an end...
 - Evaluate & share what did we accomplish?
 - Start preparing/thinking about successor...
 - Content: Strategic agenda, Digital Transformation, OWM Strategy...
 - Involvement of the Delft-FEWS community, CSB...
 - Community will be part of new vision...
 - Get information from end-users, consultants...
 - Co-creation, external guidance (process)...
 - Storytelling...
- Reach out if you have ideas, contributions!!



Where are we in ± 1.5 years...?

- Vision: ready
 - Evaluate and share what has been accomplished (2020-2024)
 - Open Archive Vision (document ready in 2023): implementation is on-going
 - New Delft-FEWS Vision for another 5 years (2025-2029) scoped and ready
- Security: top of mind
 - OWASP checks available (+ all green) in all supported branches.
 - OWASP procedure fully functioning for all supported branches
 - Development process adjusted towards security & code quality
- Python integrated in Delft-FEWS
- Cloud features/services implemented, e.g.
 - FSS (up & down) scaling implemented
 - High availability of Master Controller using Azure features
- Web Operator Client developed, delivered and maintained as part of the Delft-FEWS product suite
- AND of course...all the new features in 2023.02, 2024.01 and 2024.02...

Contact

 www.delft-fews.com

 [@DelftFEWS](https://twitter.com/DelftFEWS)

 [linkedin.com/company/deltares](https://www.linkedin.com/company/deltares)

 fews-pm@deltares.nl

 [@deltares](https://www.instagram.com/deltares)

 [facebook.com/deltaresNL](https://www.facebook.com/deltaresNL)



Deltares